

A. Install jar on Memolub motor:

Place the jar on the motor, then turn the locking ring till hearing a “click”:



B. Select the lid position:

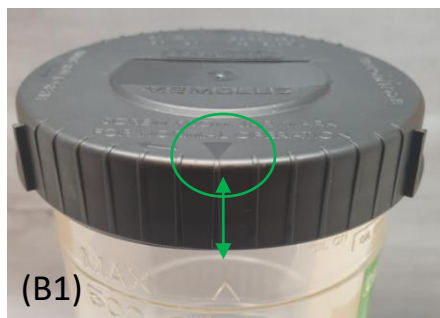
The OIL R-500 lid has 2 function mode, depending on the jar thread selection. **Prior to positioning, remove the lid from the jar**

In front to the triangle “Δ” mark on top of the jar (1), place the corresponding adequate mark of the lid:

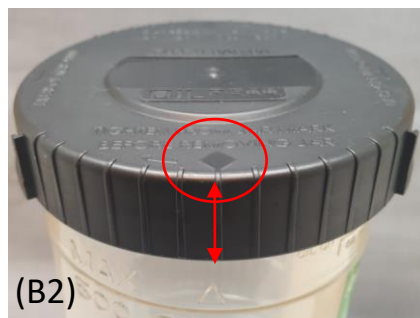
B1. ▼ (triangle), if you want the oil circulation is be “on”. Air circulation into OiIL R-500 is allowed and oil can flow out. Used when the customer wants to lubricate.

B2. ♦ (diamond), if you want the oil circulation to be “off”. OIL R-500 becomes air-tight and oil cannot flow anymore. Used when the customer must remove the jar with oil into (i.e.: to refill OIL R-500 at a workshop.)





(B1)



(B2)

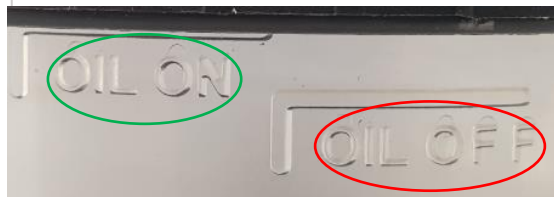
C. Close the lid

From the selected position, engage the lid on the jar neck.

For ▼ (oil on), the lid has to be screwed gently until a stop is felt.

For ◆ (oil off), the lid has to be screwed tightly.

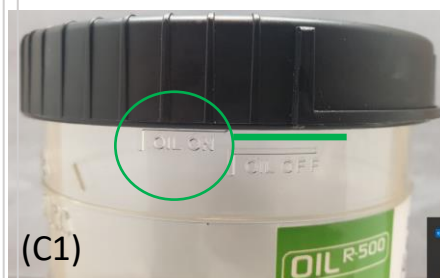
Then check the oil “on” or “off” mode; the bottom of the screwed lid will reach the corresponding mark on the jar:



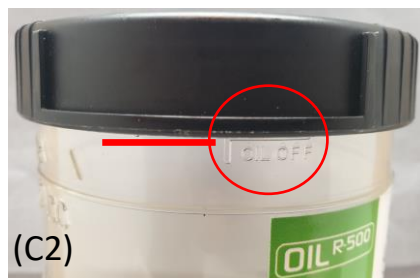
OIL **ON**/OFF
indicator on jar

For lubrication purposes lid should be screwed from (B1) till (C1) “OIL ON” indicator

For ending lubrication, lid should be screwed from (B2) till (C2) “OIL OFF” indicator



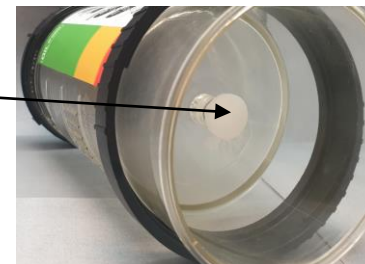
(C1)



(C2)

D. Plug: (2)

- For extended maintenance and very light oils, add the plug seated under the lid.



E. Battery felt (3)

- Memolub OIL R-500 is supplied with a battery felt (ref 6501) to protect batteries. The felt will absorb any oil spillage. It replaces “battery seal”.



F. Additional information

- Batteries to be changed every 500ML
- The Check valve must always be fitted for installation purposes. For multi-points applications each output of the distributor block should be equipped with check valve. Ref. 2806
- Battery felts are available per 12pcs. Ref. 6501
- To improve the sealing of the lid, apply oil on the lid groove.