



Installation instructions

MEMOLUB® VISIO

CE IP66 MEMOLUB INTERNATIONAL S.A.
MADE IN BELGIUM

PRECAUTIONS

- Do not open the housing: loaded spring
- Hold MEMOLUB® down during manual checks
- Use MEMOLUB® only for greasing machinery
- Use only lubricant cartridges and batteries recommended by the manufacturer

CONTENTS

	Technical informations.....	page 2
A	Replacing cartridge	page 4
B	Direct installation.....	page 5
C	Remote installation.....	page 6
D	Installation with distributor block	page 7
E	Check Function	page 8

TECHNICAL INFORMATION

Setting

Wheel position	Dosing period (time between strokes)	Refilling frequency VS Cartridge content (cc = volume / d = days / m = months)		
		Standard 120 cc	Mega 240 cc	Giga 480 cc
0	External			
1	24 h	6 m	12 m	NA
2	16 h	4 m	8 m	NA
3	12 h	3 m	6 m	12 m
4	8 h	2 m	4 m	8 m
5	4 h	1 m	2 m	4 m
6	2 h	15 d	1 m	2 m
7	1 h	7 d	15 d	1 m
8	0,5 h	-	7 d	15 d
9	0,25 h	-	-	7 d

Warning signal (LED light)

Parameter	Situation	Color
Gearbox-Motor	Damaged – Broken	Red
Battery	Empty	Yellow
T°/ Pump	Abnormal – Vacuum problem	Blue
Touchpad	Test	Green

Cable (EP/CONNECT)

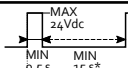
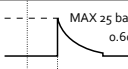
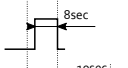

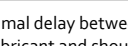
6 DIN x 0.25, 2m



Electric specifications

	VISIO HPS	VISIO EP	VISIO Connect
Power source	Int.	Int. + Ext.	Int. + Ext.
Voltage	4.5 VDC (3x1.5VDC AA)	4,5 / 24 VDC	4,5 / 24 VDC
Amperage	NA	0.5 A	0.5 A
Short circuit protection	ok	ok	ok
Polarity protection	NA	ok	ok
Stroke duration	8 sec	8 sec	8 sec
Minimum time between strokes	15 mn	15 min/ Ext	15 min/ Ext
Wire section	NA	6 x 0,25 mm²/AWG 24	6 x 0,25 mm²/AWG 24

Communication (EP/CONNECT)

Port	Signal
V _{IN} - User input	
Lube outlet 1/4"	
OC output:	
- User input	
- reception	
- Default	

*The effective minimal delay between strokes depends on used lubricant and should be reviewed by your local MEMOLUB representative.

Remote installation or with distributor block 2 to 8 outlets

Lengths of tubing with Multi2 grease grade N.L.G.I. 2, tubing Ø int. 6 mm and fittings M8 minimum	
Type of installation	Distance *
Single-point	10 m
Splitter (2 outlets) **	6 m
Distributor block (4 - 8 outlets) **	6 m

* Laboratory test under the following conditions:

- With multifunctional grease grade NLGI2
- With pipes of dimensions 6/8 mm in Rilsan
- At an ambient temperature between 10°C and 20°C

** Splitter and Distributor block: Models distributed by MEMOLUB®

NB : For any installation that differs significantly from the above conditions, please refer to your MEMOLUB® distributor.

Wiring (EP/CONNECT + PLC)

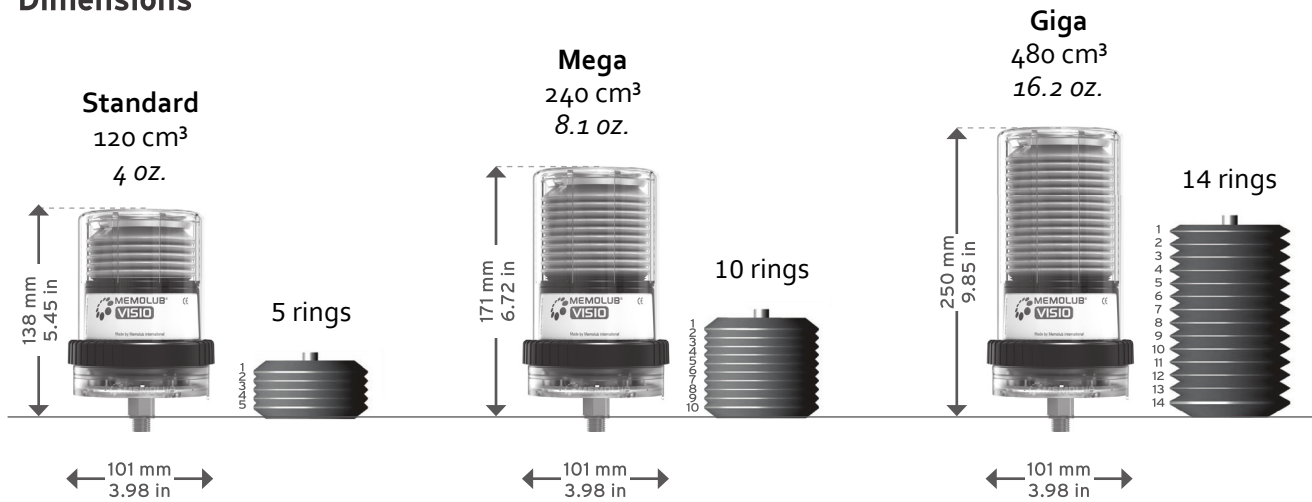
Temperature exposure range

-40°C* > +60°C

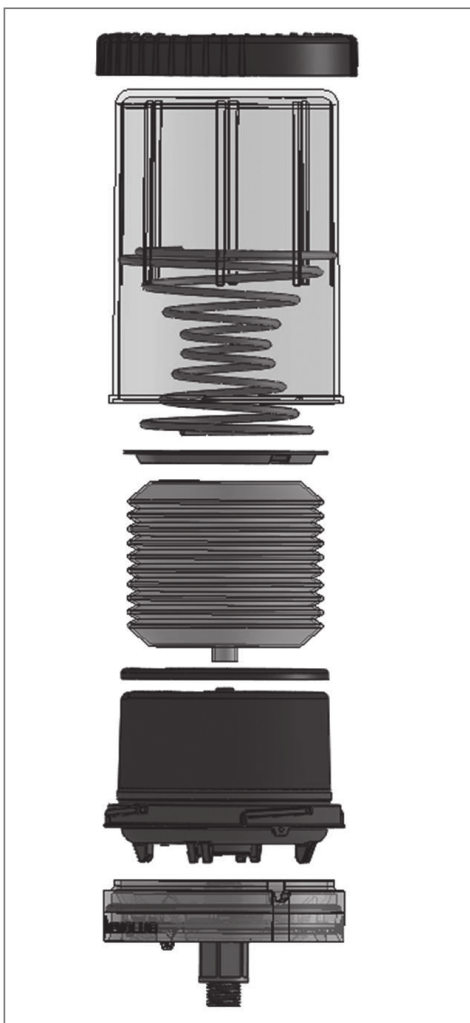
The low temperature limit may be affected depending on lubricant type or battery technology. For continuous temperatures below -10°C, we recommend using lithium batteries or 24Vdc power supply.

TECHNICAL INFORMATION

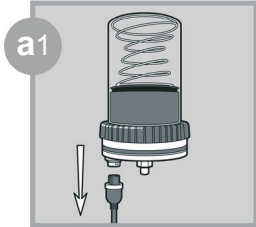
Dimensions



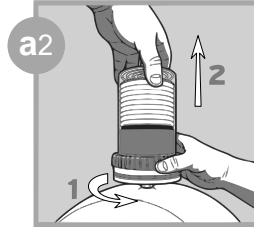
Mounting view



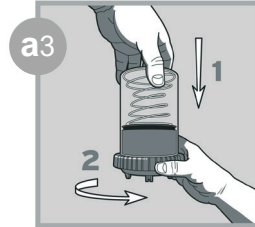
A REPLACING CARTRIDGE



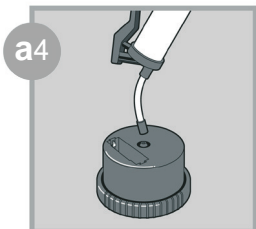
For EP/CONNECT:
Disconnect the power plug.



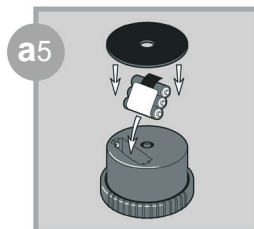
Remove the module from the base.



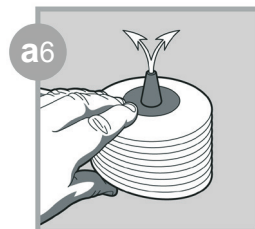
Open the module (fingers on ribs).



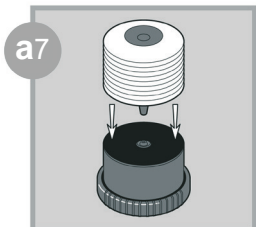
Prime the pump of the module.



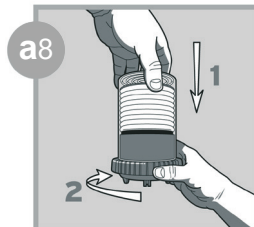
Insert new battery pack and seal.



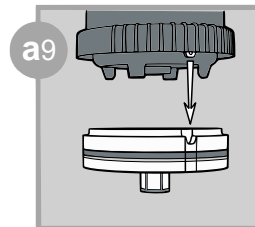
Squeeze air out of cartridge.



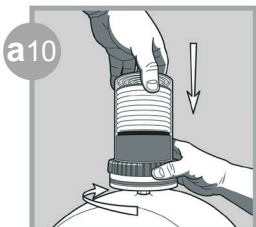
Replace cartridge.



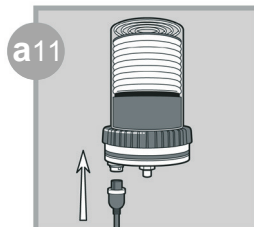
Close and lock the module (fingers on ribs).



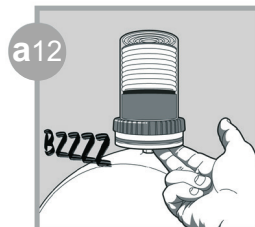
Insert the pin of the module in the notch of the base.



Screw tightly keeping the assembly aligned.

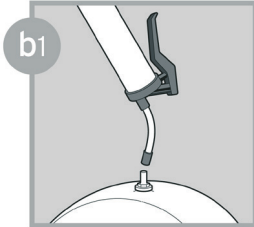


For EP/CONNECT:
connect the power plug.

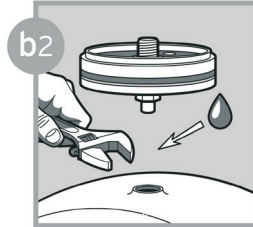


The VISIO initializes, then turns each color light successively. After one expulsion, green lights confirm normal operation.

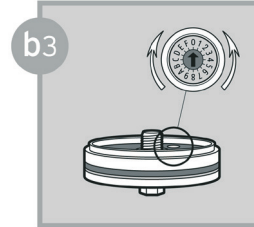
B DIRECT INSTALLATION



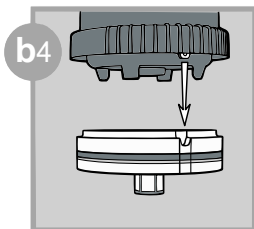
Prime lube point and remove nipple.



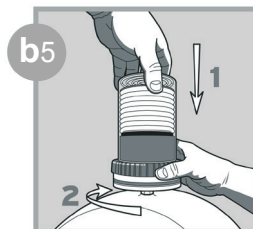
Screw in the base using a strong threadlocker.



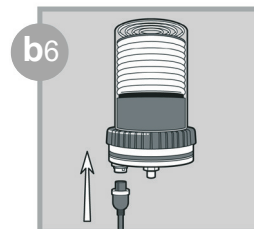
Choose the dosing setting.



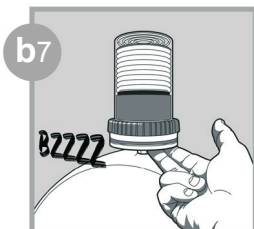
Insert the pin of the module in the notch of the base.



Screw tightly keeping the assembly aligned.

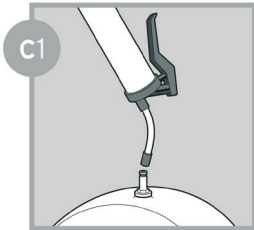


For EP/CONNECT: connect the power plug.

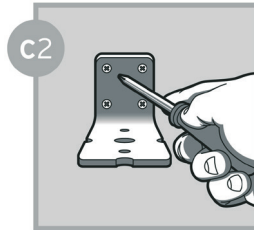


The VISIO initializes, then turns on each color light successively. After one expulsion, green lights confirm normal operation.

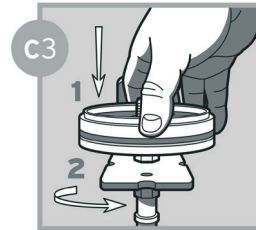
C REMOTE INSTALLATION



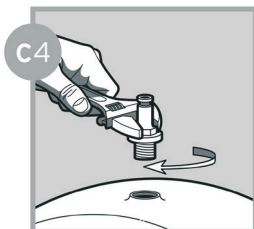
Prime lube point and remove nipple.



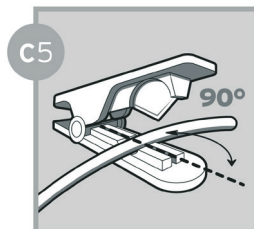
Secure bracket.



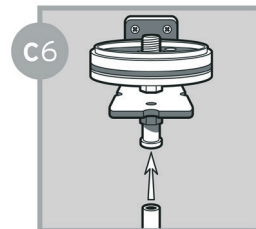
Install the base and F_{1/4} fitting using a strong threadlocker.



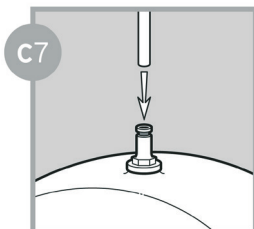
Screw BSP 1/8 fitting.



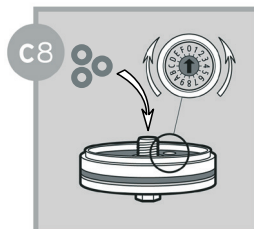
Cut hose to required size.



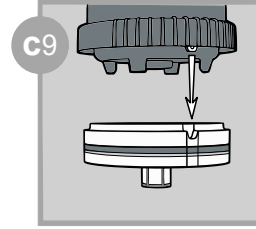
Insert hose into quick fitting.



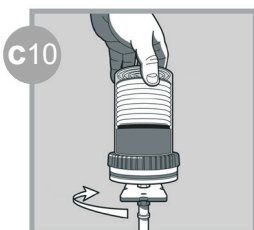
Insert hose into quick fitting.



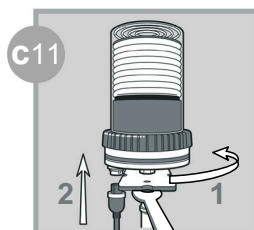
Choose the dosing setting.



Insert the pin of the module in the notch of the base.



Screw tightly keeping the assembly aligned.

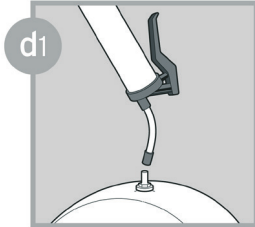


For EP/CONNECT: Move the connector outwards by unscrewing the F_{1/4} fitting. Connect the power plug.

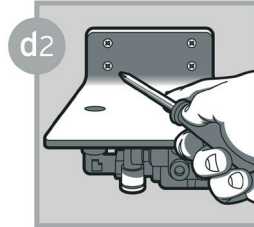


The VISIO initializes, then turns on each color light successively. After one expulsion, green lights confirm normal operation

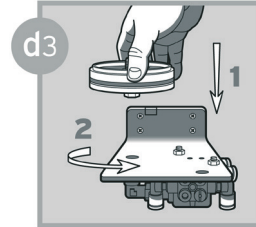
D INSTALLATION WITH DISTRIBUTOR BLOCK



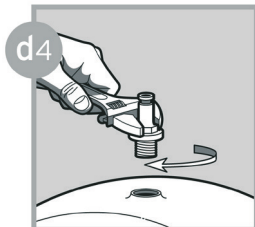
Prime lube point and remove nipple.



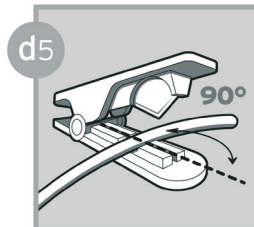
Secure bracket.



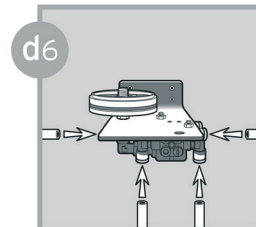
Install the base on the bracket using a strong threadlocker.



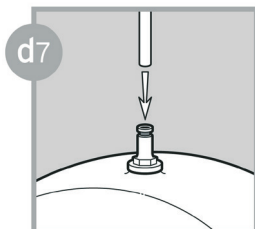
Screw BSP 1/8 fitting.



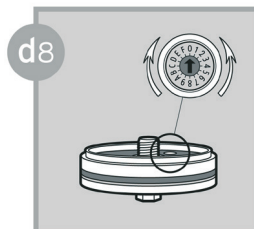
Cut hose to required size.



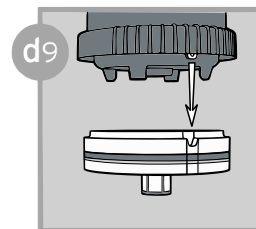
Insert hoses into quick fitting.



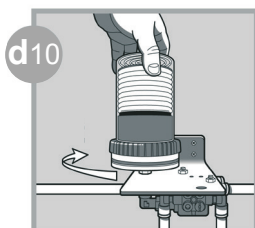
Insert hoses into quick fitting.



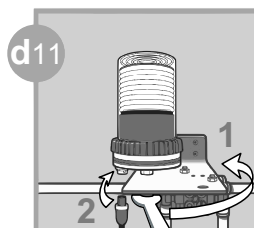
Choose the dosing setting.



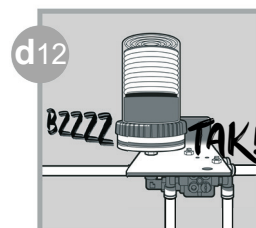
Insert the pin of the module into the notch of the base.



Screw tightly keeping the assembly aligned.

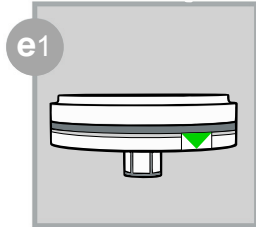


For EP/CONNECT: If necessary, move the connector outwards after unscrewing the union elbow. Screw it again and connect the power plug.

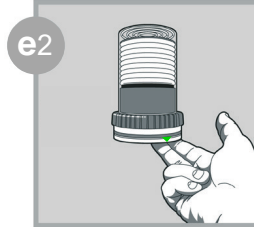


The VISIO initializes, then turns on each color light successively. After one expulsion, green lights confirm normal operation.

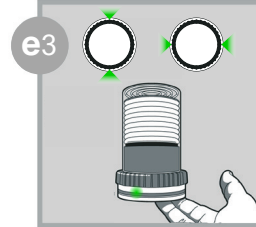
E CHECK FUNCTION



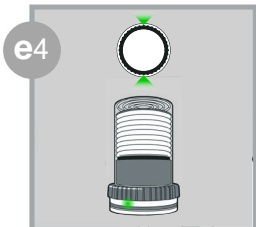
Locate the green triangular label indicating the touchpad.



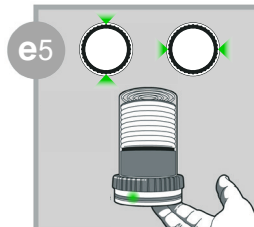
Keep your fingers under the base, below the triangular sign.



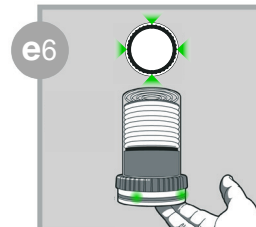
The activation of the touchpad will turn on the green lights 2 by 2 alternatively.



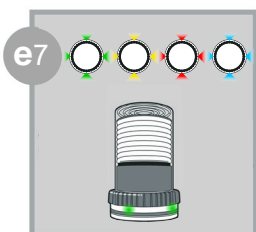
If the touchpad loses finger contact, the lights will freeze on their last position.



The finger contact can be restored within 15 sec.



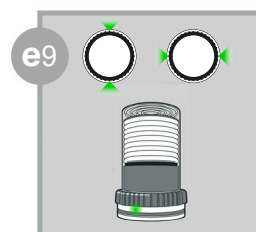
Once the total touch duration has reached 5 sec, the 4 green lights are turned on simultaneously for 1s.



The VISIO initializes, turning on each color light successively.

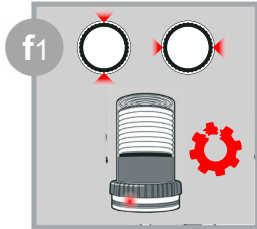


The pump makes one expulsion

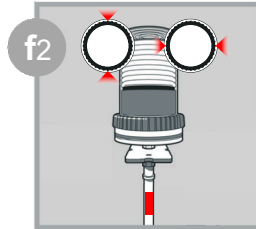


Alternating green lights will confirm normal operation. For other colors refer to section F-troubleshooting.

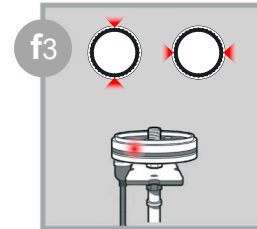
F TROUBLESHOOTING



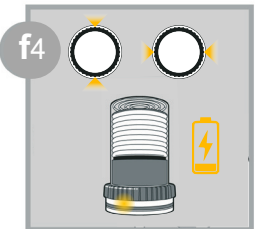
Alternating red light for 1s, every 10s: Gearbox broken or blocked. VISIO stops after 3 trials.



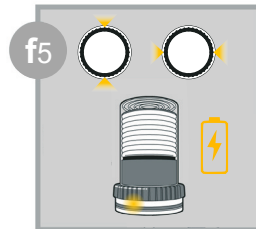
Alternating red light for 1s, every 10s: Pipe clogged (piston high). VISIO stops after 3 trials.



EP/CONNECT: Alternating red light for 1s, every 10s: no pump coupled to the base.



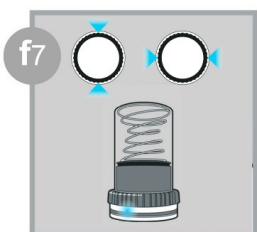
Alternating yellow lights after expulsion: battery low. Visio keeps working.



Alternating yellow lights for 1s, every 10s: battery empty. Visio stops working.



Temperature out of range: alternating blue light for 1s, every 10s. Visio keeps working.



Cartridge empty/unprimed pump: alternating blue lights for 1s, every 10s, during 4h after expulsion.